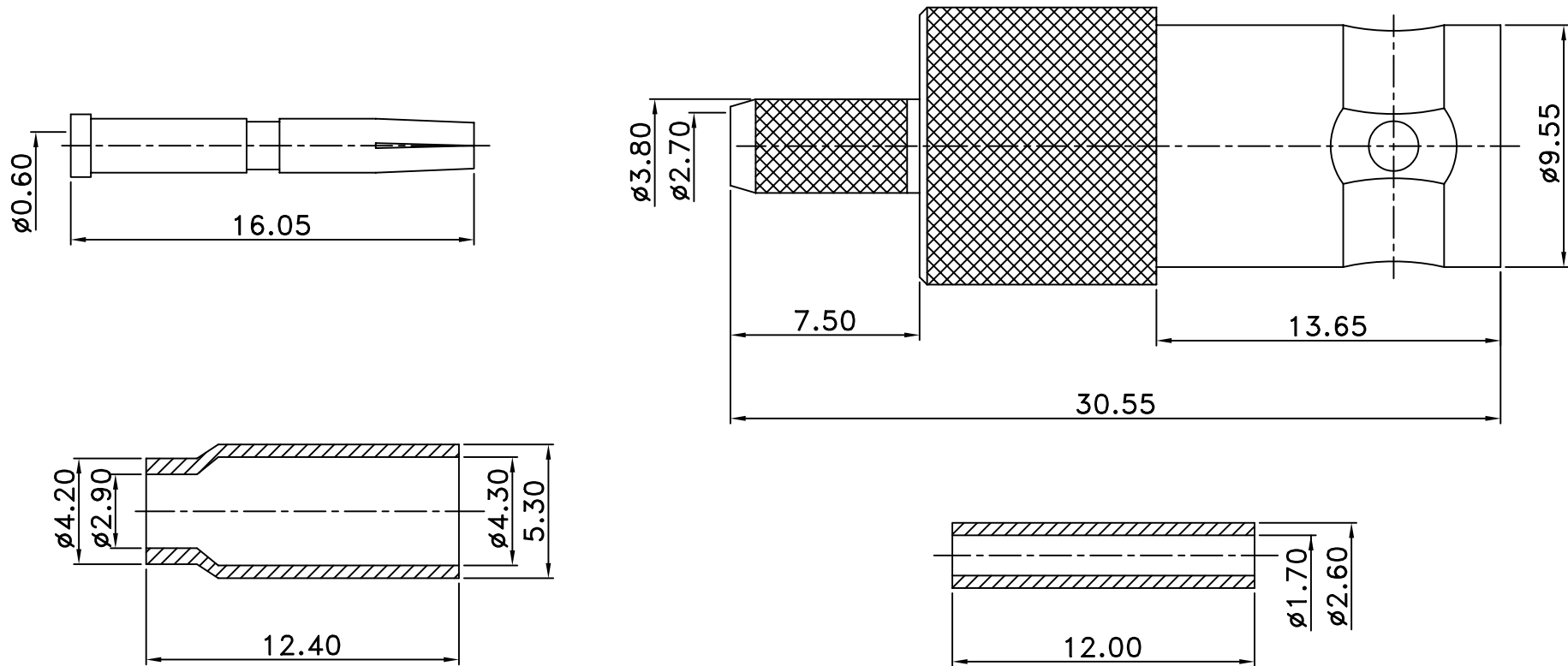




REV	DESCRIPTION	DRAWN	DATE



4	PRESS FIT WASHER	1	BRASS	NICKEL	UNLESS OTHERWISE SPECIFIED 1.REMOVE ALL BURRS. 2.BREAK ALL CONNERS & EDGES CO.15 MAX. 3.CHAMFER 1ST & LAST THREADS 45°. 4.DIAMETERS ON COMMON CENTERS. TO BE CONCENTRIC WITHIN 0.1 T.I.R. 5.ALL DIMENSIONS ARE AFTER PLATING.	* MAJOR DIMENSION UNLESS OTHERWISE NOTED TOLERANCES 0.5-6=±0.2 6-30=±0.4 30-120=±0.6 120-315=±1.0 ANGLES=±1°			APPROVED	 cobra electronics limited <small>cables connectors custom assemblies</small> 			
3	DIELECTRIC	1	TEFLON	NONE					CHECKED		TITLE		
2	PIN	1	BRASS	GOLD					DRAWN		BNC FEMALE CRIMP FOR RG174		
1	BODY	1	BRASS	NICKEL					DRAWING NO.		016.112.043	REV	A
NO	Description	Q'ty	Material	Finish					SCALE		4/1	UNIT	MM